



# The power of genomics: transforming livestock breeding and performance

## Precision breeding, Simplified.

At Eurofins Genomics, we believe that every farmer should have access to affordable genomics evaluations without sacrificing quality. With our robust international credentials and commitment to delivering reliable data in the shortest time, we are your one-stop solutions for unlocking the genetic potential in your herd and achieving your individual breeding goals.

Genomic evaluation stands as a powerful tool in accelerating selective breeding strategies, helping to cultivate stronger, healthier livestock.

However, for many dairy farms, especially those just beginning to integrate genomic selection or those of small to medium size, the cost of implementing these advanced genetic technologies can be prohibitively high and exclusive for only large holdings. Recognizing this challenge, Eurofins Genomics has partnered with Breedi, leaders in livestock genomic evaluation. Equally suitable for farms just starting out on their implementation of genomic selection, as well as those looking to enhance their current strategies, our services offer not only affordability but also advanced tools for analytics and mating, capable of supporting complex breeding techniques, such as the use of sexed semen, Beef on dairy and embryo transfer, thereby enabling farms of all sizes to achieve superior breeding outcomes with cutting-edge precision.

## YOUR SOLUTION FOR BETTER BREEDING

# Better breeding and animal health through genomic testing

## Select animals early

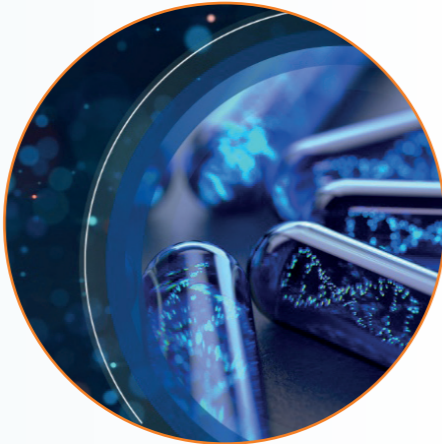
Genomic selection allows breeders to:

- Identify genetically superior animals at a very young age.
- Adjust their breeding strategy on a more informed level.

## Sell underperforming animals

Genotyped animals can receive accurate predicted transmitting abilities (PTA's) before they reach sexual maturity.

Only breed with animals aligned to your breeding goal, use Beef on dairy on the lower performing animals. Pick your elite animals based on their genomic values.



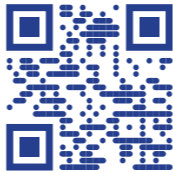
# Why Partner with Eurofins Genomics?

## Eurofins Genomics – Your Bovine DNA Expert

It's our mission to democratise access to the latest cutting edge tools to help farmers meet the need for increased (re)productivity and sustainability. The combined forces of Eurofins Genomics and Breedi brings the most affordable and accessible solutions for livestock genomic evaluation to the farms and breeding organisations.



Contact us to discuss how we can help you reach your breeding goals!  
[genfarmeval.com](https://genfarmeval.com)



**EUROFINS GENOMICS DENMARK A/S**  
Smedeskovvej 38 / 8464 Galtén, Denmark  
[AG\\_agrigenomics\\_projects@genomics.eurofinseu.com](mailto:AG_agrigenomics_projects@genomics.eurofinseu.com) / [eurofinsgenomics.com](https://eurofinsgenomics.com) / +45 7027 1170

2025\_0501

# GenFarmEval

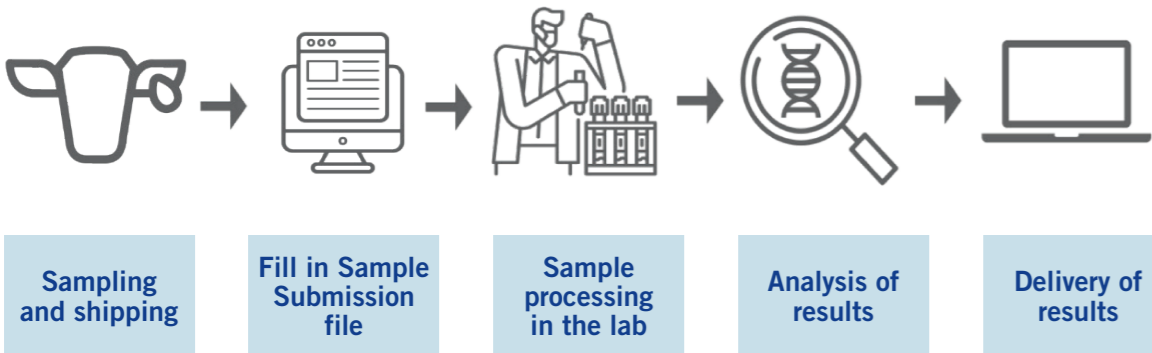
The key to more (Re) Production



GET YOUR RESULTS FAST

## Easy process – strong results

- Buy genomic test
- Take ear notch with TSU and send it to our lab in Denmark
- Log in at website
- Fill in the Sample Submission File.
- We extract DNA from the ear tissue, process and analyse it on our industry-leading array platforms.
- Log in at website to get genomic results and analysis.
- Receive genomic results and analysis in your web app.



## A complete solution for livestock genomic evaluations

Sample collection tubes (TSU's) are ordered through Eurofins dedicated app, and delivered to the farm with an applicator if needed. The samples and the submission form are sent to Eurofins Genomics Genotyping facility in Denmark for genotyping using Illumina's Infinium genotyping platform, which ensures the highest quality of data whilst minimising costs. The genotyped data for each animal is then delivered to Breedi to perform genomic evaluation. Results are delivered to the farmer as either a Genetic Passport (Basic) or online (Intermediate & Advance) via the Breedi Platform within 4-6 weeks.

## Easy to use App

### The results include:

- 19-56 performance traits
- Pedigree confirmation and correction if necessary
- Overview of recessives (affects the expression of a characteristic) & fertility haplotypes (variants that tend to be inherited together)

Access the online platform with all analytics



APPROVED BY YOUR PRESS

## Eurofins Genomics is a trusted brand around the globe

We cooperate with renowned organisations, ranging from small to large-scale enterprises to provide 'best-in-class' genomic services to both established and new and emerging Agrigenomics markets. Scientists around the world recognise and trust the Eurofins brand for our reputation for quality, timeliness and efficiency. We host only industry-leading platforms for DNA extraction, genotyping, sequencing and related genomics applications.

powered by



## Breedi is a genomic selection service provider

Eurofins provides genomic selection solutions for livestock producers, including: reference database development, breeding value estimation, breeding index calculation, herd genetic progress analytics, and animal mating effect predictions. All these data and processes are consolidated in a user-friendly web application that simplifies the on-farm implementation of genomic breeding methods. Having operated in emerging markets, Eurofins has gained extensive experience in constructing genomic evaluation systems within specific regions and collaborating with associations to enhance local breed production efficiency. This not only sustains genetic diversity but also allows producers to maintain their traditional farming practices.



# GenFarmEval

Improve herd productivity through genomic testing

	BASIC	INTERMEDIATE	ADVANCE
	Traits & Indexes 19	Traits & Indexes 19	Traits & Indexes 56
Production traits	3	3	5
Fertility traits	7	7	8
Composite indexes	3	3	5
Calving traits	3	3	3
Longevity traits	2	2	3
Health trait	1	1	8
Type traits	0	0	21
Feed efficiency	0	0	3
Mating tool**	⊗	⊙	⊙
Acces to Breedi App**	⊗	⊙	⊙
Genomic passport**	⊙	⊙	⊙
Add BVD Result***	⊙	⊙	⊙
Caseins	⊗	⊗	⊙
Polled	⊗	⊗	⊙
Recessives & Haplotypes	⊗	⊗	⊙
Ancestry	⊗	⊗	⊙
5 Languages	⊙	⊙	⊙
5 Breeds	⊙	⊙	⊙
Genomic inbreeding	⊗	⊗	⊙

\*\* GenFarmEval is powered by Breedi App



Find the perfect solution for your needs!

[genfarmeval.com](https://genfarmeval.com)

### \*\*\* Why screen your herd for BVD? Isn't vaccination enough?

Vaccination helps but doesn't guarantee full protection. Persistently infected (PI) animals can bypass vaccine defenses and continue spreading BVD. Regular screening is essential to detect these animals and stop transmission.

One TSU – Two Insights  
**With just one tissue sample (TSU), you get both BVD status and genomic data.**

- Improve herd health
- Work toward BVD-free status
- Early individual results
- Cost- and labour-efficient
- Internationally recognized testing